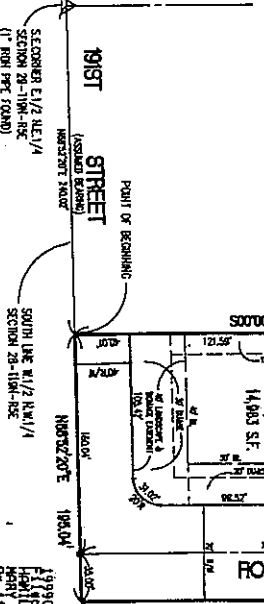
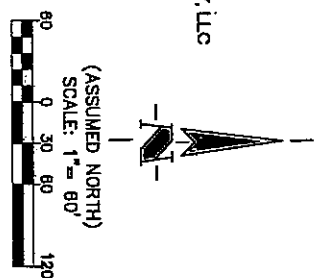
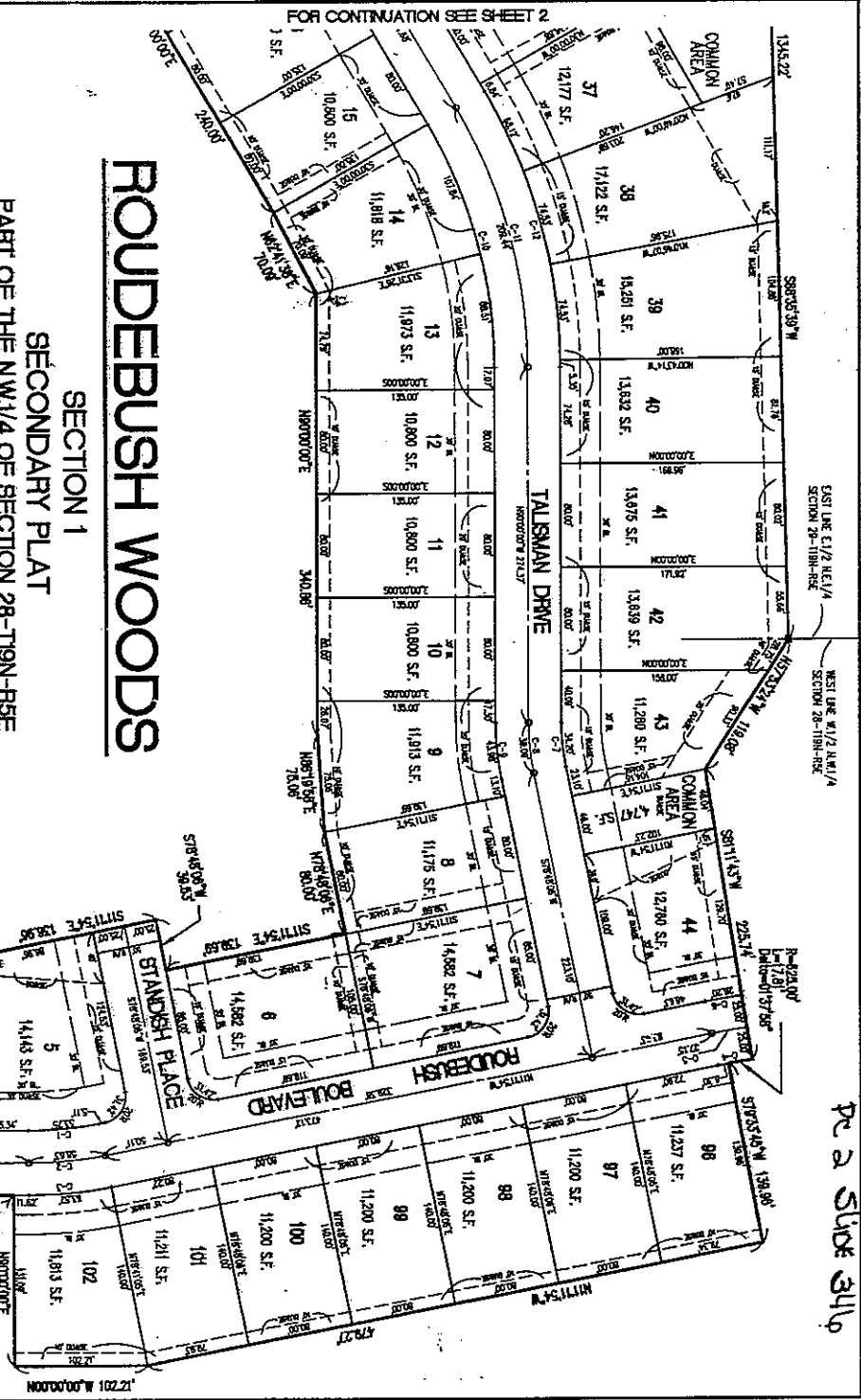


PRE 2 SIDE 3416



ROUDEBUSH WOODS

Per Avid 520

SECTION 2
SECONDARY PLAT
PART OF THE N.W.1/4 OF SECTION 28-T19N-R5E
PART OF THE NE.1/4 OF SECTION 29-T19N-R5E
NOBLESVILLE, INDIANA

Photorecognized
HAMILTON COUNTY, INDIANA
MERRY L. CLARK
DPI 2-04-2000 Rs. 01554 pa.
PLAT 35-00

OWNER/SUBVIDER

ROUDEBUSH DEVELOPMENT COMPANY, LLC
1911 LAKEBIDE DRIVE
FISHERS, IN 46038
(317) 849-7607

SURVEYOR

THE SCHNEIDER CORPORATION
3020 NORTH POST ROAD
INDIANAPOLIS, IN 46226
(317) 898-8282

DULY ENTERED FOR TAXATION
Subject to final acceptance for income
Taxes by day of Dec. 31, 2002

A. M. G. L.
Auditor
Hamilton County



(ASSUMED NORTH)
SCALE: 1" = 80'

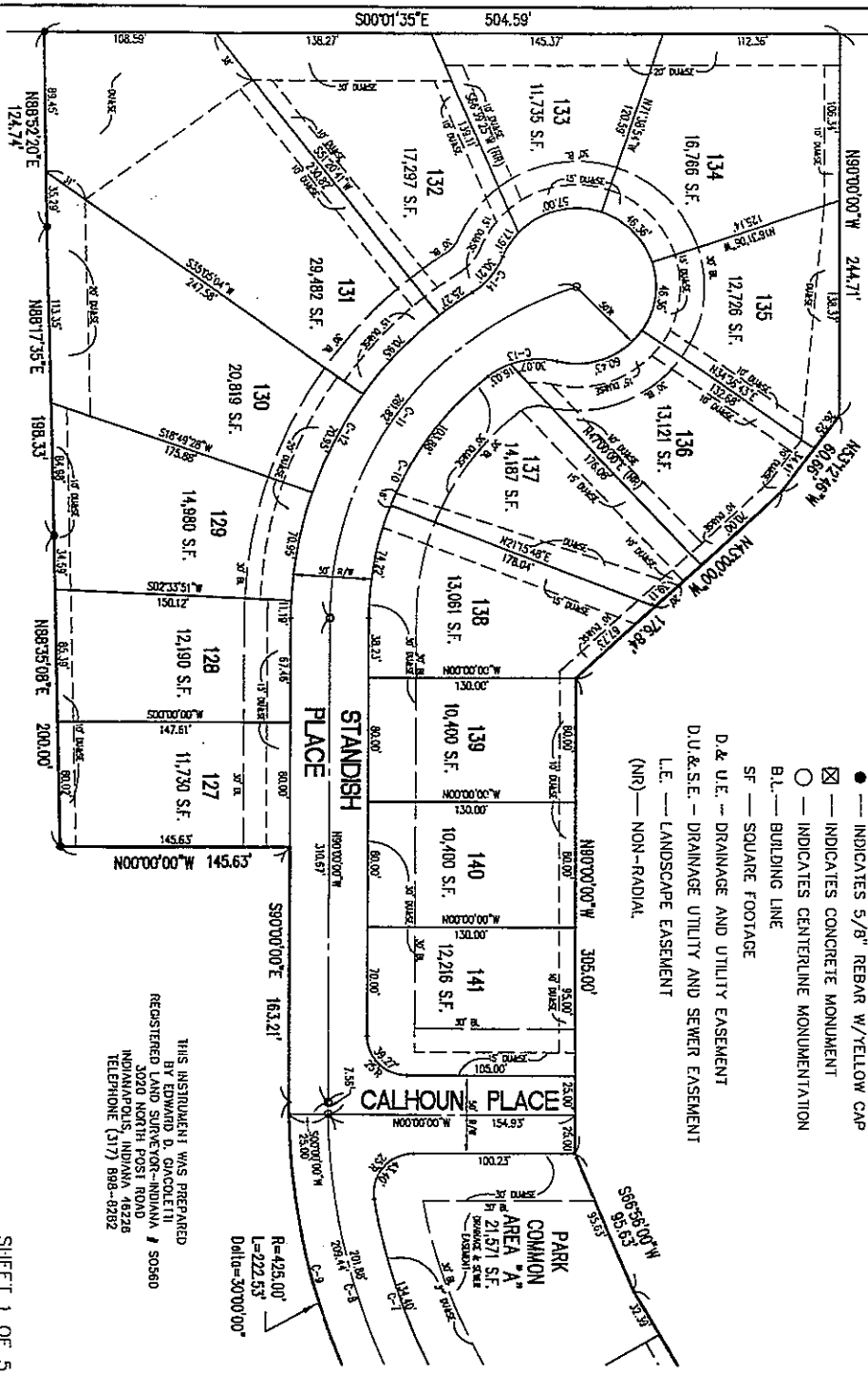


WEST LINE C.1/2 N.E.1/4
SECTION 29-T19N-R5E

LEGEND

- INDICATES 5/8" REBAR W/YELLOW CAP
- ⊠ INDICATES CONCRETE MONUMENT
- INDICATES CENTERLINE MONUMENTATION
- B.L. — BUILDING LINE
- SF — SQUARE FOOTAGE
- D. & U.E. — DRAINAGE AND UTILITY EASEMENT
- D.V. & S.E. — DRAINAGE UTILITY AND SEWER EASEMENT
- L.E. — LANDSCAPE EASEMENT
- (NR) — NON-RADIAL

CURVE	RADIUS	LENGTH	CHORD	DIRECTION	DELTA
C1	275.00'	53.75'	53.66'	N89°24'03"E	111°15'4"
C2	300.00'	36.67'	36.54'	N84°24'03"E	111°15'4"
C3	325.00'	63.52'	63.42'	N80°24'03"E	111°15'4"
C4	275.00'	143.59'	142.35'	S75°00'00"W	30°00'00"
C5	300.00'	152.08'	155.28'	S75°00'00"W	30°00'00"
C6	325.00'	170.17'	168.23'	S75°00'00"W	30°00'00"
C7	375.00'	134.40'	133.66'	N70°10'07"E	20°30'00"
C8	400.00'	209.44'	207.06'	N75°00'00"E	30°00'00"
C9	425.00'	222.53'	220.00'	N75°00'00"E	30°00'00"
C10	500.00'	178.10'	172.27'	S64°29'21"E	50°10'18"
C11	225.00'	281.82'	263.75'	S54°07'09"E	71°45'49"
C12	250.00'	249.31'	239.11'	S61°25'53"E	57°08'14"
C13	50.00'	46.10'	44.48'	S12°33'46"E	52°46'52"
C14	50.00'	36.21'	29.26'	N50°10'26"W	34°37'20"
C15	625.00'	503.15'	303.88'	S05°15'54"W	28°08'23"
C16	650.00'	530.98'	316.34'	S14°35'51"W	46°48'12"
C17	675.00'	503.15'	491.58'	S12°12'58"W	46°48'12"
C18	625.00'	99.32'	99.21'	S33°26'51"W	69°06'17"
C19	325.00'	78.32'	77.56'	S72°17'45"E	12°49'18"
C20	350.00'	78.32'	78.16'	S72°17'45"E	12°49'18"
C21	325.00'	83.92'	83.74'	S72°17'46"E	12°49'18"
C22	225.00'	92.32'	91.67'	N63°45'16"W	23°30'33"
C23	250.00'	102.58'	101.86'	N63°45'16"W	23°30'33"
C24	275.00'	112.84'	112.05'	N63°45'16"W	23°30'33"
C25	275.00'	52.25'	52.08'	N82°47'53"W	14°34'41"
C26	250.00'	63.61'	63.44'	N82°47'53"W	14°34'41"
C27	275.00'	69.97'	69.78'	N82°47'53"W	14°34'41"
C28	200.00'	50.58'	50.45'	N07°14'44"E	14°29'27"
C29	225.00'	56.91'	56.75'	N07°14'44"E	14°29'27"
C30	250.00'	63.23'	63.06'	N07°14'44"E	14°29'27"



THIS INSTRUMENT WAS PREPARED
BY EDWARD D. GACOLETTI
REGISTERED LAND SURVEYOR-INDIANA # 50560
1020 NORTH POST ROAD
NOBLESVILLE, INDIANA 46060
TELEPHONE (317) 898-4282

FOR CONTINUATION SEE SHEET 2

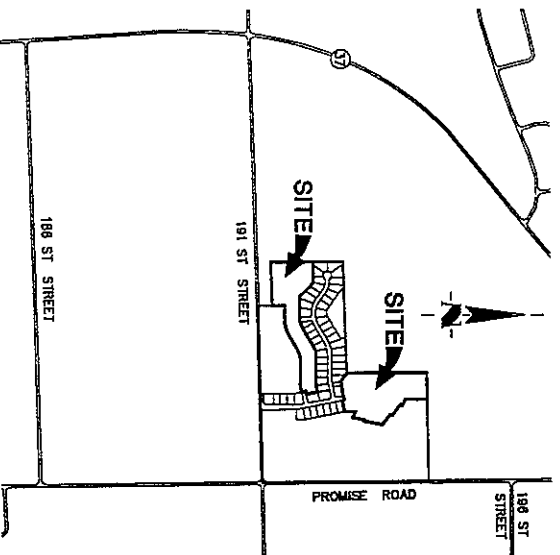
ROUDEBUSH WOODS

SECTION 2

SECONDARY PLAT

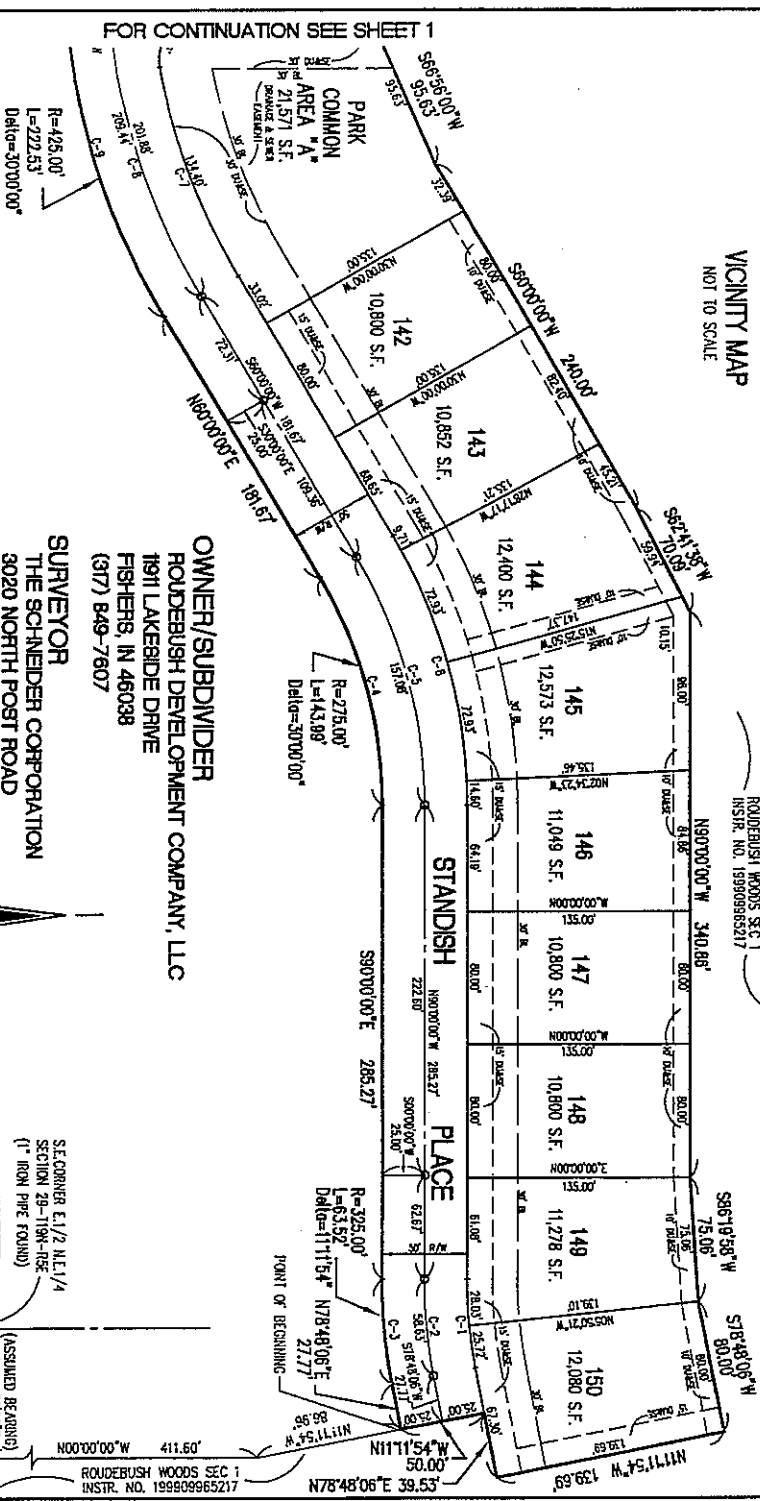
PART OF THE NW 1/4 OF SECTION 28-119N-R5E PART OF THE NE 1/4 OF SECTION 29-119N-R5E NOBLESVILLE, INDIANA

p.c.a. *Aruda* 5'2.0
 11/19/2006
 Edward J. Giacoletti
 HAMILTON COUNTY, INDIANA
 MARY L. CLARK, R.S.
 DN 12-04-2000 R.S. 0154 p.p.
 35.00



THIS INSTRUMENT WAS PREPARED
 BY EDWARD D. GIACOLETTI
 REGISTERED LAND SURVEYOR-INDIANA # 50580
 3020 NORTH POST ROAD
 ANDERSON, INDIANA 46016
 TELEPHONE (317) 988-8282

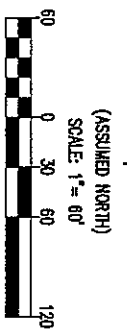
VICINITY MAP
 NOT TO SCALE



OWNER/SUBDIVIDER
 ROUDEBUSH DEVELOPMENT COMPANY, LLC
 1911 LAKEBIDE DRIVE
 FISHERS, IN 46038
 (317) 849-7607

SURVEYOR
 THE SCHNEIDER CORPORATION
 3020 NORTH POST ROAD
 INDIANAPOLIS, IN 46226
 (317) 888-8282

- LEGEND**
- ☒ INDICATES CONCRETE MONUMENT
 - INDICATES CENTERLINE MONUMENTATION
 - B.L. BUILDING LINE
 - SF SQUARE FOOTAGE
 - D. & U.E. DRAINAGE UTILITY AND SEWER EASEMENT
 - D.U. & S.E. DRAINAGE UTILITY AND SEWER EASEMENT
 - (NR) NON-RADIAL



S.E. CORNER E. 1/2 N.E. 1/4
 SECTION 29-119N-R5E
 (1" IRON PIPE FOUND)

191ST STREET

SOUTH LINE W. 1/2 N.W. 1/4
 SECTION 28-119N-R5E

(ASSUMED BEARING)
 N89°52'20"E
 240.02'

ROUDEBUSH WOODS

SECTION 2 SECONDARY PLAT

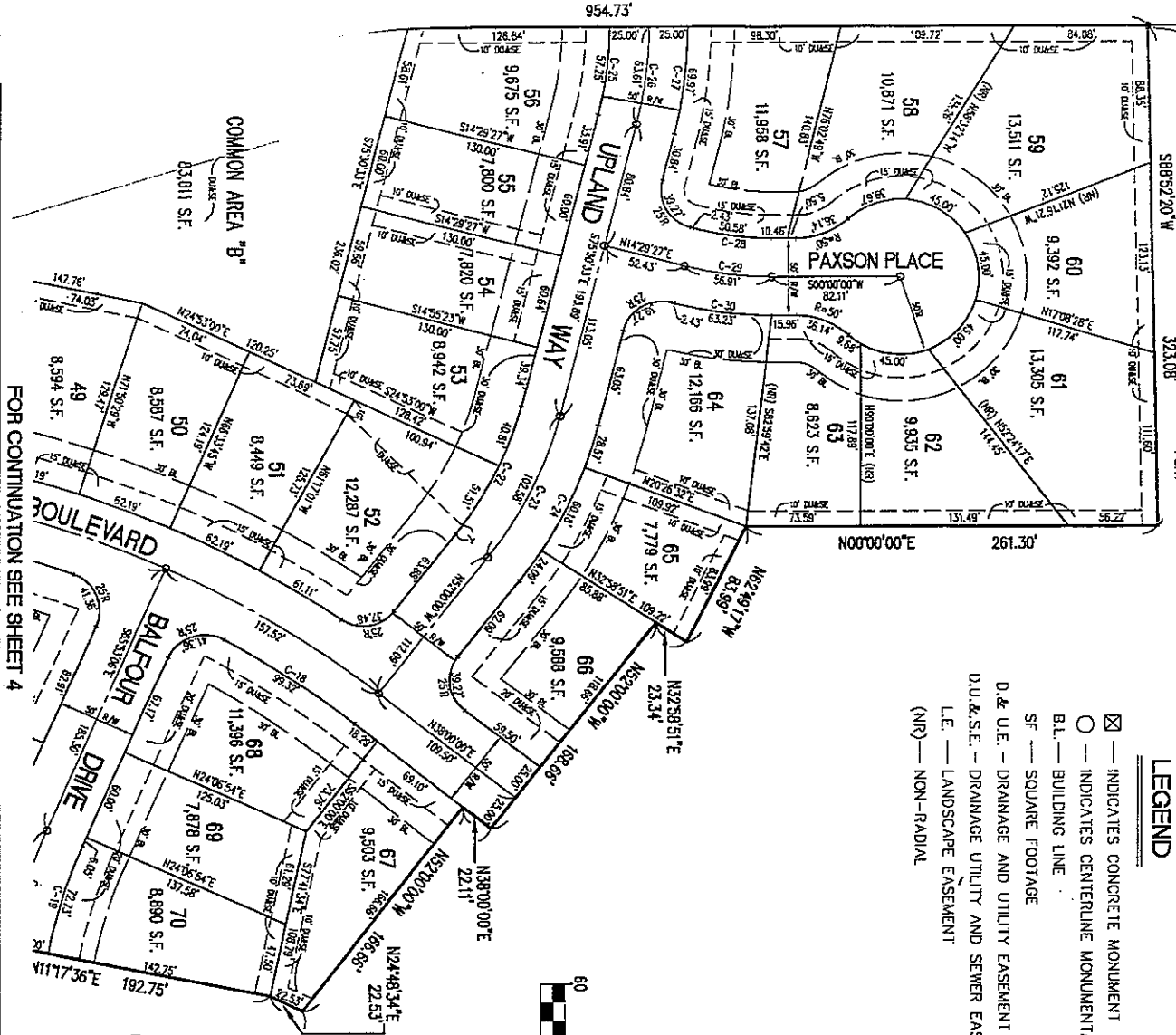
PART OF THE N.W.1/4 OF SECTION 28-T19N-R5E
PART OF THE NE.1/4 OF SECTION 29-T19N-R5E
NOBLESVILLE, INDIANA

P.C. & M.L. 5-20

5/8" REBAR W/YELLOW
CAP S.E. PAVED PIPE
FOUND 3.5' N. & 4.7' W.

Professional Surveyor
Hamilton County, Indiana
Harry L. Clark
On 12-04-2000 At 01:54 PM.
PLAT 39.00

- LEGEND**
- ▣ INDICATES CONCRETE MONUMENT
 - INDICATES CENTERLINE MONUMENTATION
 - B.L.— BUILDING LINE
 - SF — SQUARE FOOTAGE
 - D & U.E. — DRAINAGE AND UTILITY EASEMENT
 - D.U. & S.E. — DRAINAGE UTILITY AND SEWER EASEMENT
 - L.E. — LANDSCAPE EASEMENT
 - (NR) — NON-RADIAL



FOR CONTINUATION SEE SHEET 4

SHEET 3 OF 5

THIS INSTRUMENT WAS PREPARED
BY EDWARD D. GRACOLETTI
REGISTERED LAND SURVEYOR-INDIANA # 50560
3020 NORTH POST ROAD
INDIANAPOLIS, INDIANA 46226
TELEPHONE (317) 888-8282

OWNER/SUBDIVIDER
ROUDEBUSH DEVELOPMENT COMPANY, LLC
1811 LAKESIDE DRIVE
FISHERS, IN 46038
(317) 849-7607

SURVEYOR
THE SCHNEIDER CORPORATION
3020 NORTH POST ROAD
INDIANAPOLIS, IN 46226
(317) 898-8282

ROUDEBUSH WOODS

SECTION 2
 SECONDARY PLAT
 PART OF THE N.W.1/4 OF SECTION 28-T19N-R5E
 PART OF THE NE.1/4 OF SECTION 29-T19N-R5E
 NOBLESVILLE, INDIANA

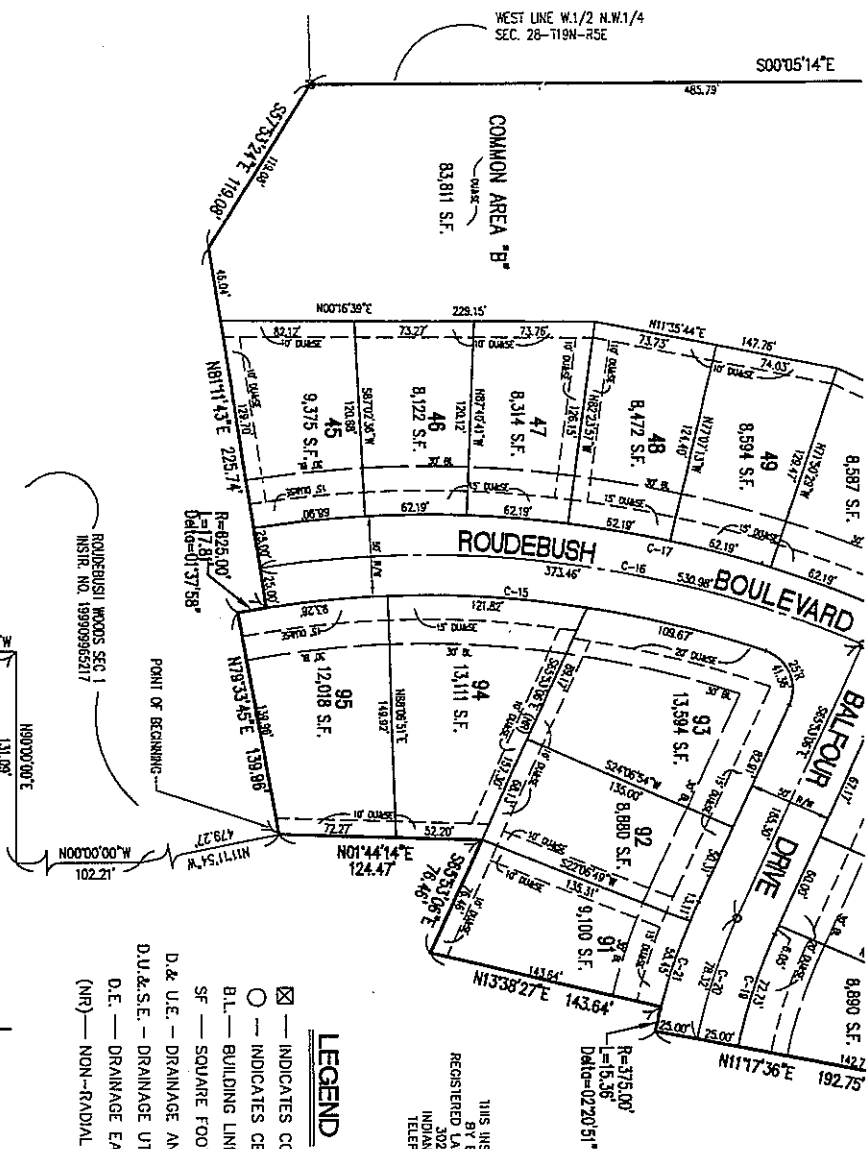
OWNER/SUBDIVIDER
 ROUDEBUSH DEVELOPMENT COMPANY, LLC
 1911 LAKESIDE DRIVE
 FISHERS, IN 46038
 (317) 849-7607

pe & d'olive s'ro

SP00000606265
 Filed for Record in
 HAMILTON COUNTY, INDIANA
 MAP NO. 12-04-2000 RE 01154 pp.
 PLAT NO. 2-04-2000 39.00

SURVEYOR
 THE SCHNEIDER CORPORATION
 3020 NORTH POST ROAD
 INDIANAPOLIS, IN 46226
 (317) 898-8282

FOR CONTINUATION SEE SHEET 3



THIS INSTRUMENT WAS PREPARED
 BY EDWARD D. GIACOLETTI
 REGISTERED LAND SURVEYOR-INDIANA # 50560
 3020 NORTH POST ROAD
 INDIANAPOLIS, INDIANA 46226
 TELEPHONE (317) 898-8282

LEGEND

- ☒ INDICATES CONCRETE MONUMENT
- INDICATES CENTERLINE MONUMENTATION
- B.L.— BUILDING LINE
- SF — SQUARE FOOTAGE
- D. & U.E.— DRAINAGE AND UTILITY EASEMENT
- D.U. & S.E.— DRAINAGE UTILITY AND SEWER EASEMENT
- D.E.— DRAINAGE EASEMENT
- (NR) — NON-RADIAL

